



**25 gal
(95 L)
HYDRAULIC OIL
RESERVOIR**



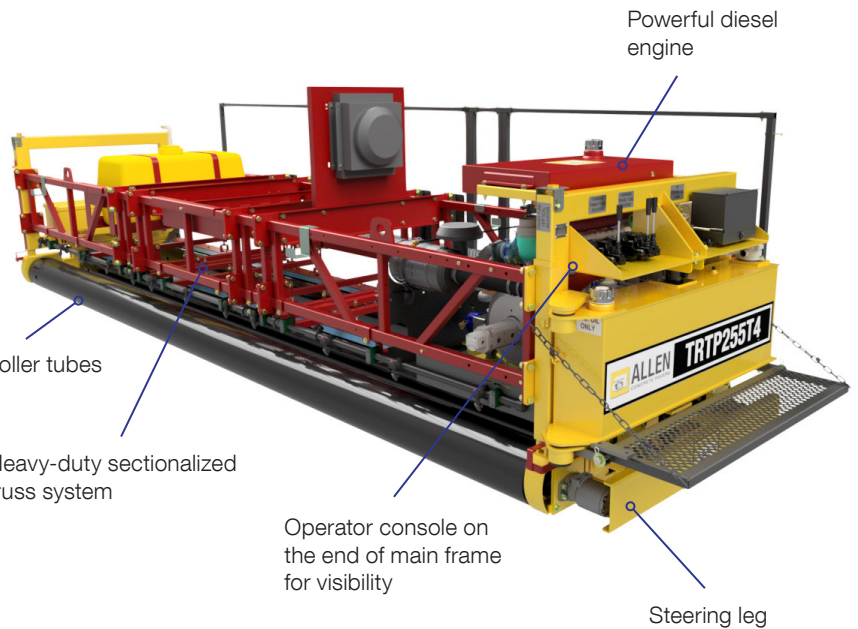
**Hatz 3H50TIC (T4F)
LIQUID-COOLED
DIESE ENGINE**



**12 - 34 ft
(3.7 - 10.4 m)
WIDTHS AVAILABLE
(2 FT INCREMENTS)**



**49.5 hp
(36.9 kW)
HORSEPOWER**

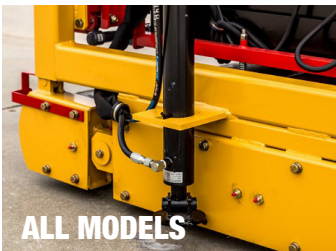


TRTP255T4

The 255 is a beast of a machine with a 47hp Hatz diesel engine. Easy operator controls are located on the end of the frame to allow the operator the ability to view the roadway ahead, and behind the machine, to make sure the final grade and finish meets the required specs.



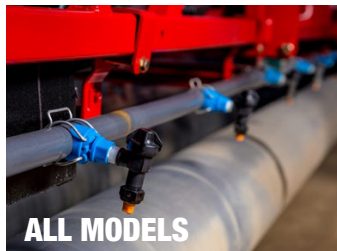
Scan this QR code to learn more details about this product.



ALL MODELS

HYDRAULIC STEERING LEG

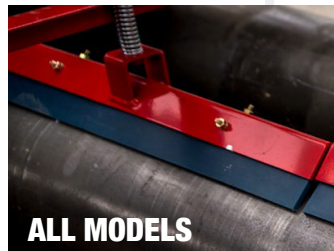
Hydraulic steering leg allows the operator the ability to straighten the machine while paving and "steer" through a radius pour.



ALL MODELS

SPRAY SYSTEM

Allows fogging of screeding tube to keep concrete from sticking to the tube. Fog bar is made with QD couplings for ease of assembly for machine reconfiguration. Available on all models.



ALL MODELS

TUBE SCRAPERS

Drive tube scrapers prevent build-up on tubes allowing for easier clean-up at the end of the day. Available on all models.

SPECIFICATIONS

DESCRIPTION	TRTP255T4
ENGINE	Hatz 3H50TIC (T4F)
HORSEPOWER CLASS	49.5 hp (36.9 kW)
FUEL TYPE	Liquid-Cooled Diesel
WIDTHS AVAILABLE (2 FT INCREMENTS)	12 - 34 ft (3.7 - 10.4 m)
WEIGHT AT 22 FT	5,570 lb (2,527 kg)
ROLLER TUBE DIAMETER	10 in (25.4 cm)
TUBE WEIGHT PER FT	27 lb (12 kg)
HYDRAULIC OIL RESERVOIR	25 gal (95 L)
HYDRAULIC SPRAY SYSTEM	Standard
HYDRAULIC STEERING LEG	Standard



NOTE: The gang vibration system is only offered on the TRTP275 model. The TRTP255T4 is the only model offered without vibration.

STEEL EDGE FORMS AND ACCESSORIES

Allen offers a complete line of steel edge forms, including straight forms, radius, dual-sided and heavy-duty paving forms (dowel holes upon request).

