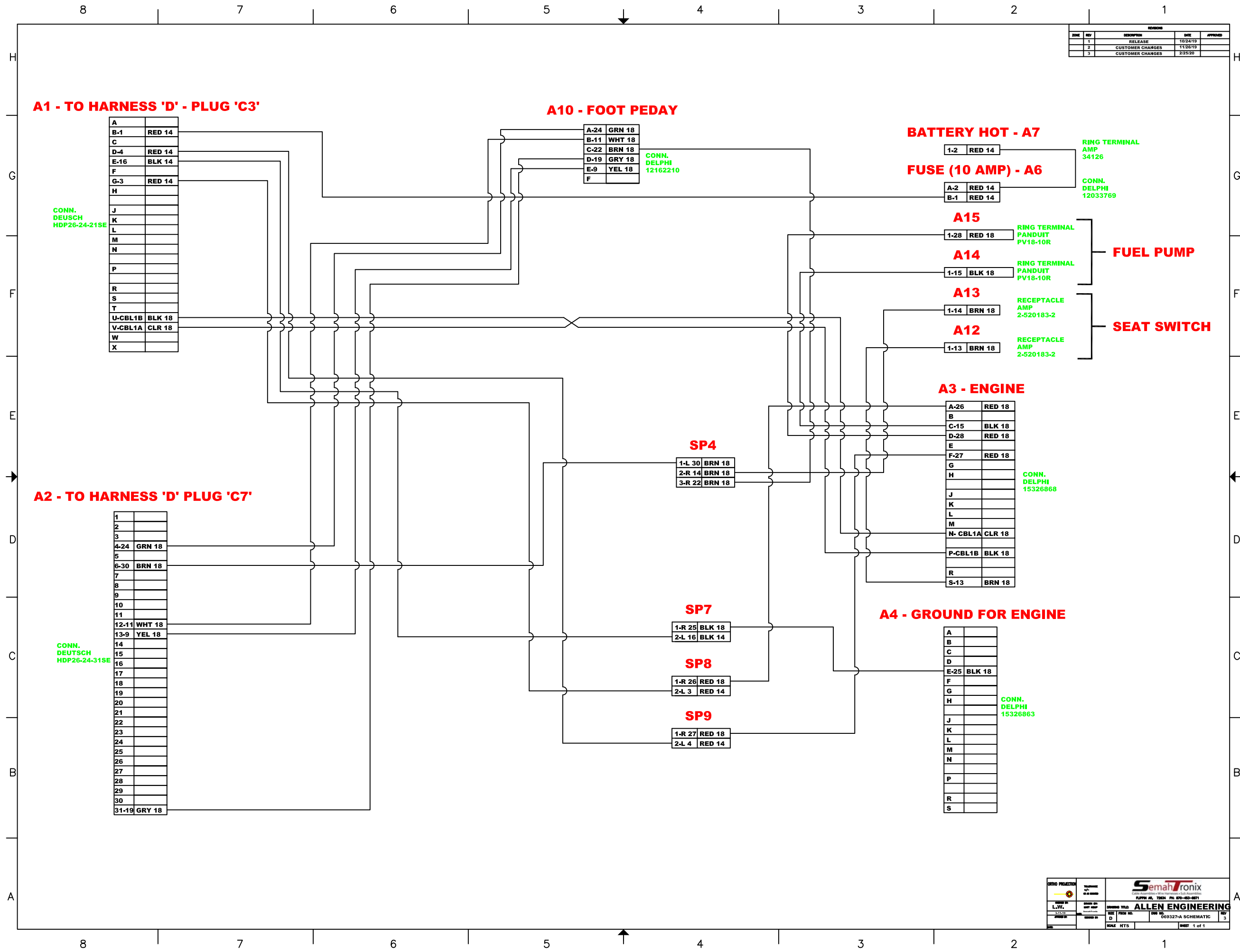
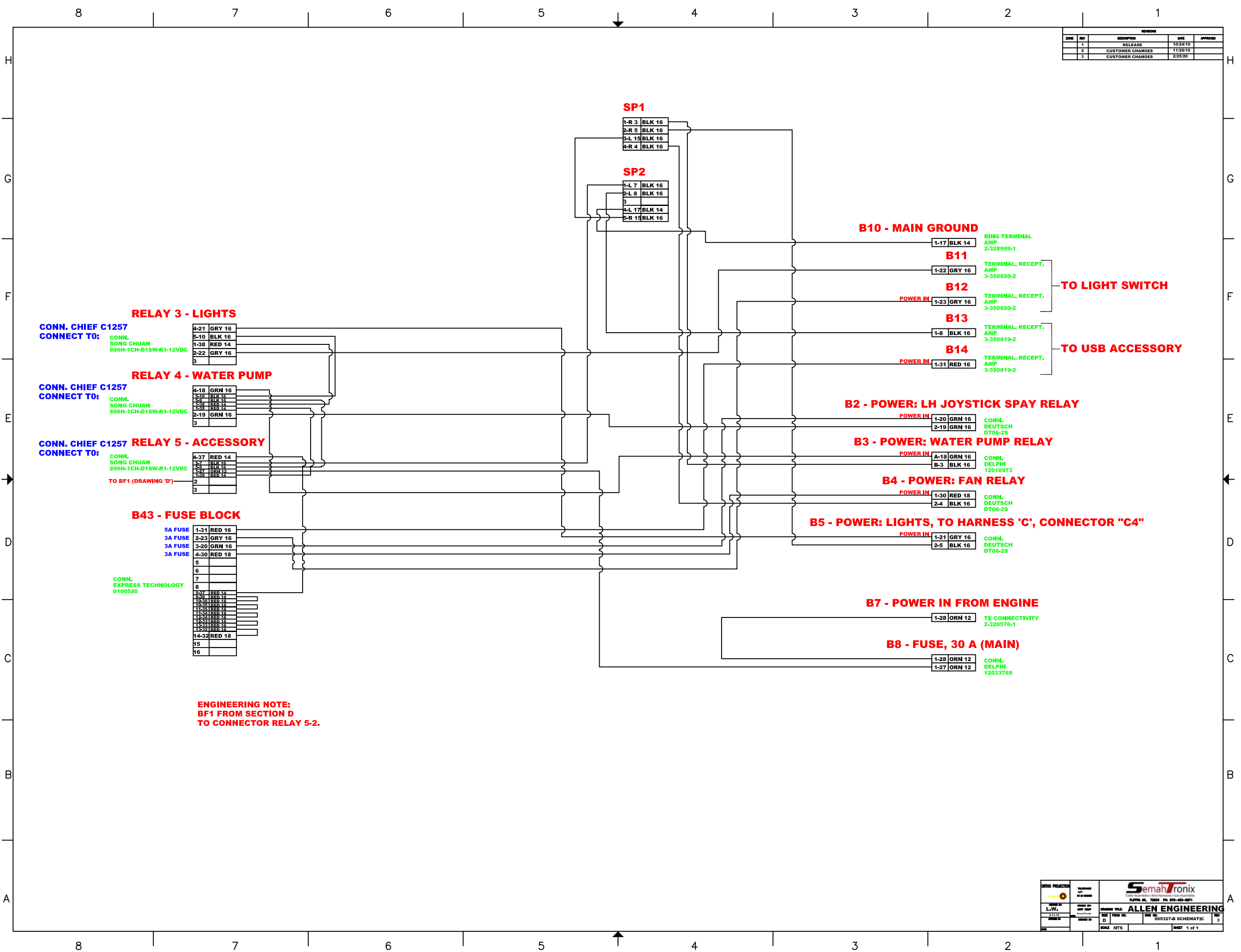


ZONE	REV	DESCRIPTION	DATE	APPROVED
1		RELEASE	10/24/19	
2		CUSTOMER CHANGES	11/25/19	
3		CUSTOMER CHANGES	2/25/20	



	DRAWN BY L.W.	CHECKED BY D	DESIGNED BY ALLEN ENGINEERING	DATE 06/23/20	SHEET NO. 3
	SCALE NTS	SHEET 1 of 1			

ZONE	REV	DESCRIPTION	DATE	APPROVED
1		RELEASE	10/24/19	
2		CUSTOMER CHANGES	11/28/19	
3		CUSTOMER CHANGES	2/25/20	



ENGINEERING NOTE:
BF1 FROM SECTION D
TO CONNECTOR RELAY 5-2.

	SEMATRONIX <small>CONNECTIONS • WIRING • TESTING</small>
	ALLEN ENGINEERING <small>DESIGN • FABRICATION • SUPPORT</small>
DRAWING TITLE: 069327-8 SCHEMATIC SHEET: 3 OF 3	DATE: 2/25/20 REV: 3

LIGHT HARNESS

REV	DESCRIPTION	DATE	APPROVED
1	RELEASE	10/24/19	
2	CUSTOMER CHANGES	11/28/19	
3	CUSTOMER CHANGES	2/25/20	

C1

1-1	WHT 18
2-8	BLK 18

C2

1-2	WHT 18
2-9	BLK 18

C3

1-3	WHT 18
2-10	BLK 18

C4 - POWER IN

1-4	WHT 18
2-11	BLK 18

C5

1-5	WHT 18
2-12	BLK 18

C6

1-6	WHT 18
2-13	BLK 18

C7

1-7	WHT 18
2-14	BLK 18

SP1

1-L 1	WHT 18
2-L 2	WHT 18
3-L 3	WHT 18
4-R 4	WHT 18
5-R 5	WHT 18
6-R 6	WHT 18
7-R 7	WHT 18

SP2

1-L 8	BLK 18
2-L 9	BLK 18
3-L 10	BLK 18
4-R 11	BLK 18
5-R 12	BLK 18
6-R 13	BLK 18
7-R 14	BLK 18

CONN. DEUTSCH DT06-2S

RIGHT SIDE

CONN. DEUTSCH DT06-2S

CONN. DEUTSCH DT06-2S

CONN. DEUTSCH DT04-2P

CONN. DEUTSCH DT06-2S

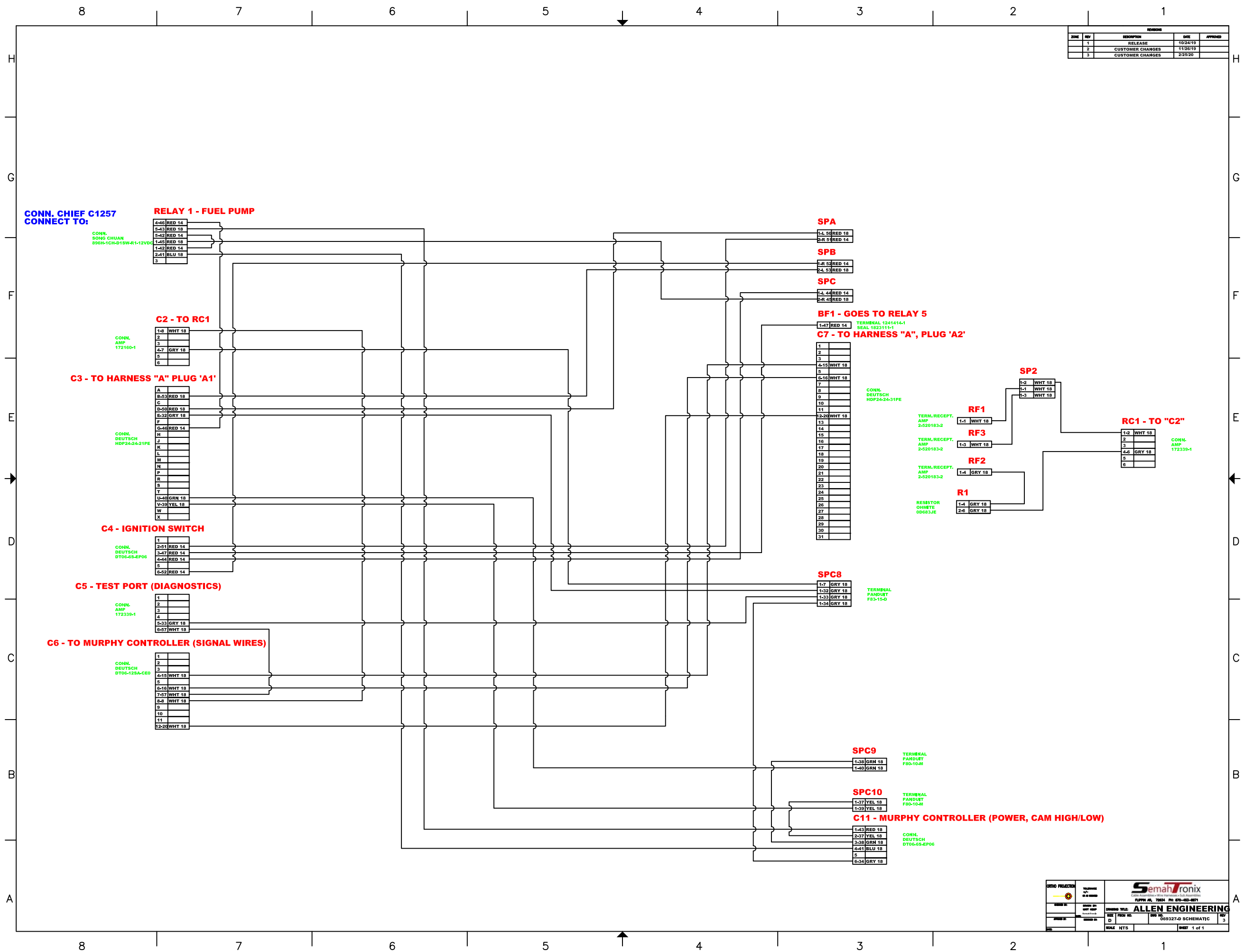
LEFT SIDE

CONN. DEUTSCH DT06-2S

CONN. DEUTSCH DT06-2S

DESIGN PROJECT	DATE	SCALE	REV
		ALLEN ENGINEERING	
DATE	SCALE	REV	
D		3	
069327-C SCHEMATIC		SHEET 1 of 1	

ZONE	REV	DESCRIPTION	DATE	APPROVED
	1	RELEASE	10/24/18	
	2	CUSTOMER CHANGES	11/26/18	
	3	CUSTOMER CHANGES	2/25/20	



 ALLEN ENGINEERING	069327-D SCHEMATIC	3
1 of 1	1 of 1	1 of 1