



**40 lb (18 kg)
BACKPACK
WEIGHT**



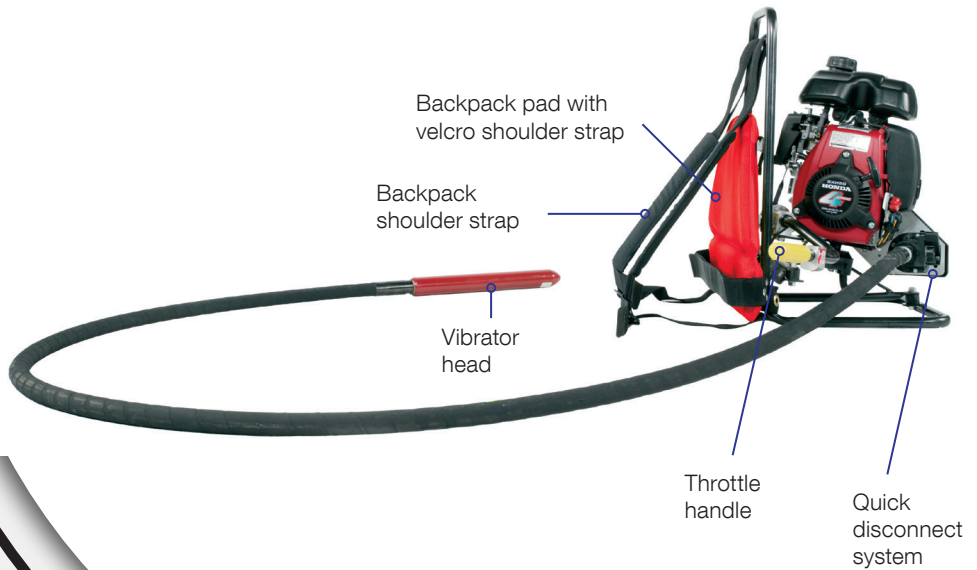
**Honda GXH50
(49 cc)
GASOLINE**



**2.5 hp (1.9 kW)
HORSEPOWER**



**11,000 - 12,000
VIBRATIONS PER
MINUTE**



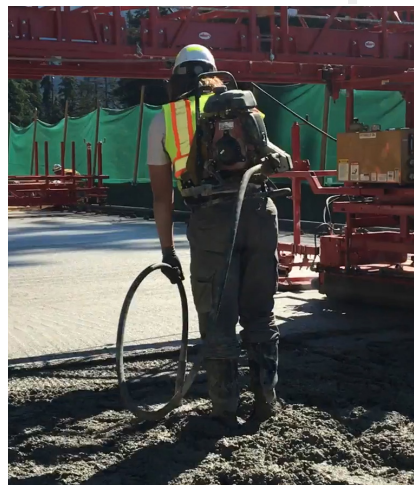
Scan this QR code to learn more details about this product.

BP50

Our backpack vibrator allows you to go anywhere without worrying about the need for electricity. It features a “speed-up” transmission that allows the engine to run at low rpm’s and still produce high vibrations per minute.



This unit makes changing heads and shafts easy via our quick disconnect system.



SPECIFICATIONS

SPECIFICATIONS		BP50
ENGINE		Honda GXH50 (49 cc)
HORSEPOWER CLASS		2.5 hp (1.9 kW)
VIBRATIONS PER MINUTE		11,000 - 12,000
PART NO.	MODEL NO.	DESCRIPTION
039284	BP50	Vibrator, Flex Shaft, Backpack Power Unit, Weight: 40 lb (18 kg)
035018	FSVS-2	Vibrator, Flexible Shaft 2' (.61 m), 3 lb (1 kg)
035019	FSVS-5	Vibrator, Flexible Shaft 5' (1.52 m), 6 lb (3 kg)
035020	FSVS-7	Vibrator, Flexible Shaft 7' (2.13 m), 9 lb (4 kg)
035021	FSVS-10	Vibrator, Flexible Shaft 10' (3.04 m), 12 lb (5 kg)
035022	FSVS-14	Vibrator, Flexible Shaft 14' (4.26 m), 16 lb (7 kg)
035023	FSVS-21	Vibrator, Flexible Shaft 21' (6.40 m), 24 lb (11 kg)
035001	FSVH100-13	Vibrator, Head, Steel 1" x 13" (25 mm x 33 cm), 3 lb (1 kg)
035002	FSVH125-13	Vibrator, Head, Steel 1 ¼" x 13" (32 mm x 33 cm), 4 lb (2 kg)
035003	FSVH150-14	Vibrator, Head, Steel 1 ½" x 14" (38 mm x 36 cm), 6 lb 3 kg)
035004	FSVH175-14	Vibrator, Head, Steel 1 ¾" x 14" (44 mm x 36 cm), 8 lb (4 kg)
035005	FSVH200-14	Vibrator, Head, Steel 2" x 14" (51 mm x 36 cm), 10 lb (5 kg)
035006	FSVH250-13	Vibrator, Head, Steel 2 ½" x 13" (64 mm x 33 cm), 11 lb (5 kg)
035028	FSVRH17814	Vibrator, Head, Rubber 1 7/8" x 14" (48 mm x 36 cm), 5 lb (2 kg)
035029	FSVRH27515	Vibrator, Head, Rubber 2 ¾" x 15" (70 mm x 38 cm), 10 lb (5 kg)
035030	FSVRH2756	Vibrator, Head, Rubber 2 ¾" x 6" (70 mm x 15 cm), 5 lb (2 kg)

