



**13.5 gal
(51 L)
HYDRAULIC OIL
RESERVOIR**



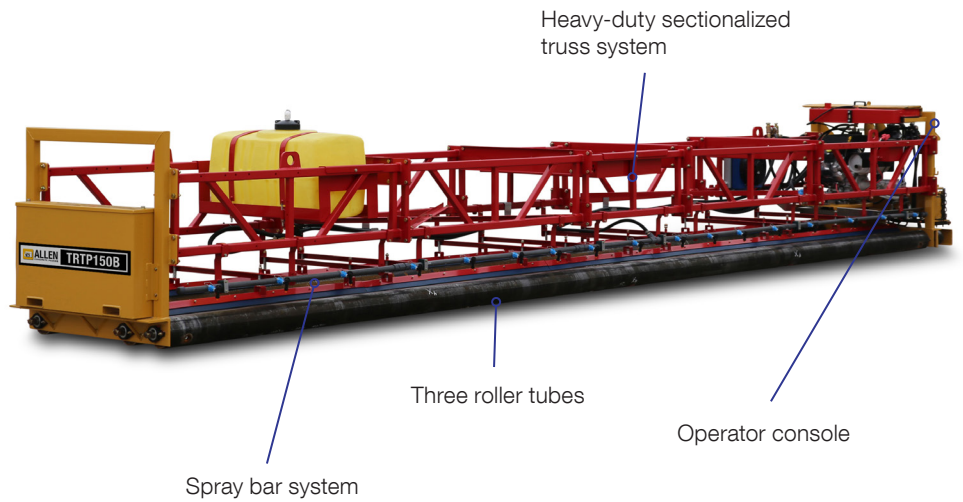
**KOHLER ECH1000
(999 cc) EFI
AIR-COOLED
GASOLINE ENGINE**



**12 - 32 ft
(3.7 - 9.8 m)
WIDTHS AVAILABLE
(2 FT INCREMENTS)**



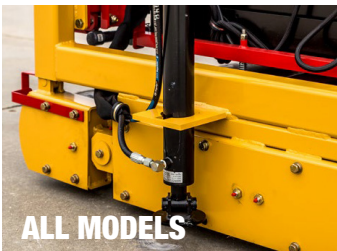
**37 hp
(27.6 kW)
HORSEPOWER**



Scan this QR code to learn more details about this product.

TRTP150B

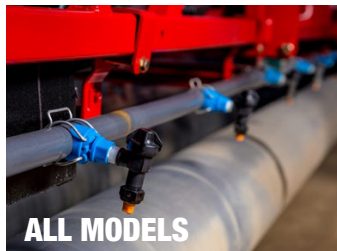
The 150 allows contractors the ability to get the job done at an economical price without sacrificing quality. This unit also has optional front and rear access platforms to allow the contractor the ability to vibrate from the front, or finish from the back, during the paving process.



ALL MODELS

HYDRAULIC STEERING LEG

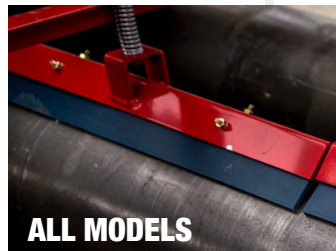
Hydraulic steering leg allows the operator the ability to straighten the machine while paving and "steer" through a radius pour.



ALL MODELS

SPRAY SYSTEM

Allows fogging of screeding tube to keep concrete from sticking to the tube. Fog bar is made with QD couplings for ease of assembly for machine reconfiguration. Available on all models.



ALL MODELS

TUBE SCRAPERS

Drive tube scrapers prevent build-up on tubes allowing for easier clean-up at the end of the day. Available on all models.

SPECIFICATIONS

DESCRIPTION	TRTP150B
ENGINE	KOHLER ECH1000 (999 cc) EFI
HORSEPOWER CLASS	37 hp (27.6 kW)
FUEL TYPE	Air-Cooled Gasoline
WIDTHS AVAILABLE (2 FT INCREMENTS)	12 - 32 ft (3.7 - 9.8 m)
WEIGHT AT 22 FT	2,790 (1,266 kg)
ROLLER TUBE DIAMETER	6.625 in (16.8 cm)
TUBE WEIGHT PER FT	19 lb (9 kg)
HYDRAULIC OIL RESERVOIR	13.5 gal (51 L)
HYDRAULIC SPRAY SYSTEM	Standard
HYDRAULIC STEERING LEG	Standard

STEEL EDGE FORMS AND ACCESSORIES

Allen offers a complete line of steel edge forms, including straight forms, radius, dual-sided and heavy-duty paving forms (dowel holes upon request).

