

**9 gal  
(34 L)  
HYDRAULIC OIL  
RESERVOIR**



**Honda EFI  
GASOLINE  
ENGINE**



**14 - 22 ft  
(3.6 - 9.7 m)  
WIDTHS AVAILABLE  
(2 FT INCREMENTS)**



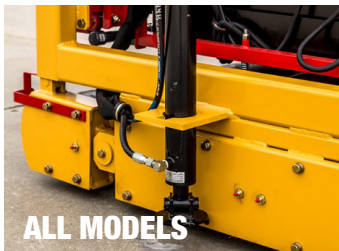
**22 hp  
(27.6 kW)  
HORSEPOWER**



Scan this QR code to learn more details about this product.

# TRTP75

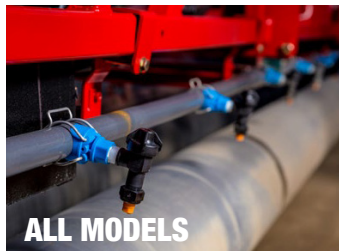
The lightest weight and least expensive machine in the TRTP product group, the 75 enables contractors to use a machine that handles small paving pours that would otherwise be too heavy for a truss screed. This unit is a nice addition to the Triple Tube Paver Group with some of the features and functions of the larger size machines.



**ALL MODELS**

### HYDRAULIC STEERING LEG

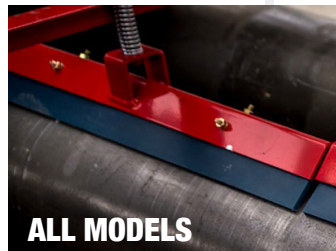
Hydraulic steering leg allows the operator the ability to straighten the machine while paving and "steer" through a radius pour.



**ALL MODELS**

### SPRAY SYSTEM

Allows fogging of screeding tube to keep concrete from sticking to the tube. Fog bar is made with QD couplings for ease of assembly for machine reconfiguration. Available on all models.



**ALL MODELS**

### TUBE SCRAPERS

Drive tube scrapers prevent build-up on tubes allowing for easier clean-up at the end of the day. Available on all models.

## SPECIFICATIONS

DESCRIPTION	TRTP75
ENGINE	Honda EFI
HORSEPOWER CLASS	22 hp (27.6 kW)
FUEL TYPE	Gasoline
WIDTHS AVAILABLE (2 FT INCREMENTS)	14 - 22 ft (3.6 - 9.7 m)
WEIGHT AT 22 FT	2,626 lbs (1,191 kg)
ROLLER TUBE DIAMETER	6" or 8"
TUBE WEIGHT PER FT	19 lbs (9 kg) / 21 lbs (9.5 kg)
HYDRAULIC OIL RESERVOIR	9 gal (34 L)
HYDRAULIC SPRAY SYSTEM	OPTION
HYDRAULIC STEERING LEG	OPTION

## STEEL EDGE FORMS AND ACCESSORIES

Allen offers a complete line of steel edge forms, including straight forms, radius, dual-sided and heavy-duty paving forms (dowel holes upon request).

