

FINISHING

RIDING TROWELS: MECHANICAL PRO // MP SERIES



**6 gal (23 L)
FUEL
CAPACITY**



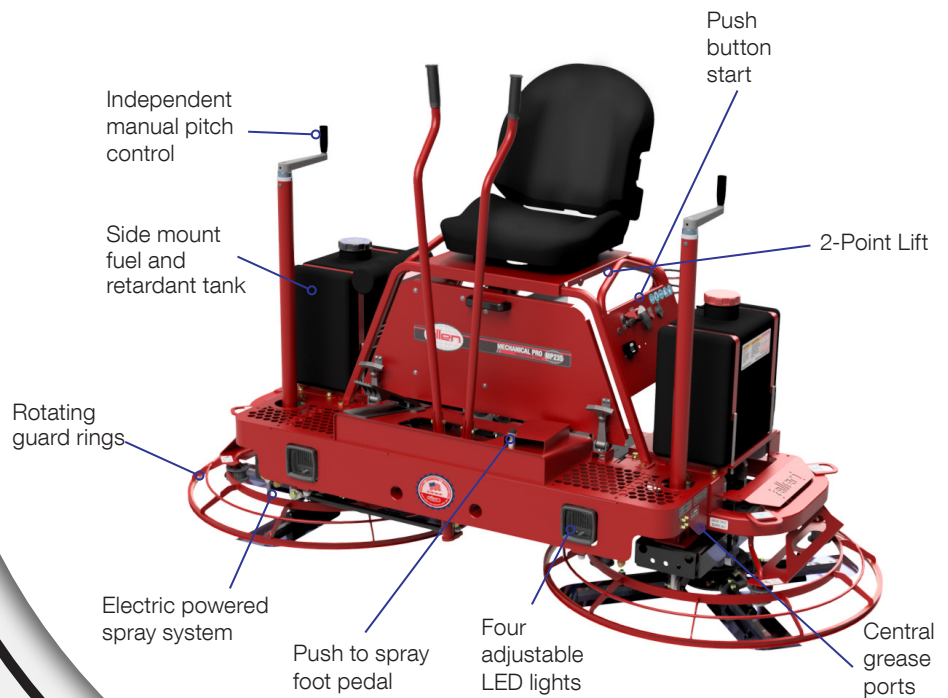
**Honda GX700
(688 cc)
AIR-COOLED
GASOLINE
ENGINE**



**185 rpm
MAXIMUM ROTOR
SPEED**



**36 in (91 cm)
4-BLADED
SPIDER**

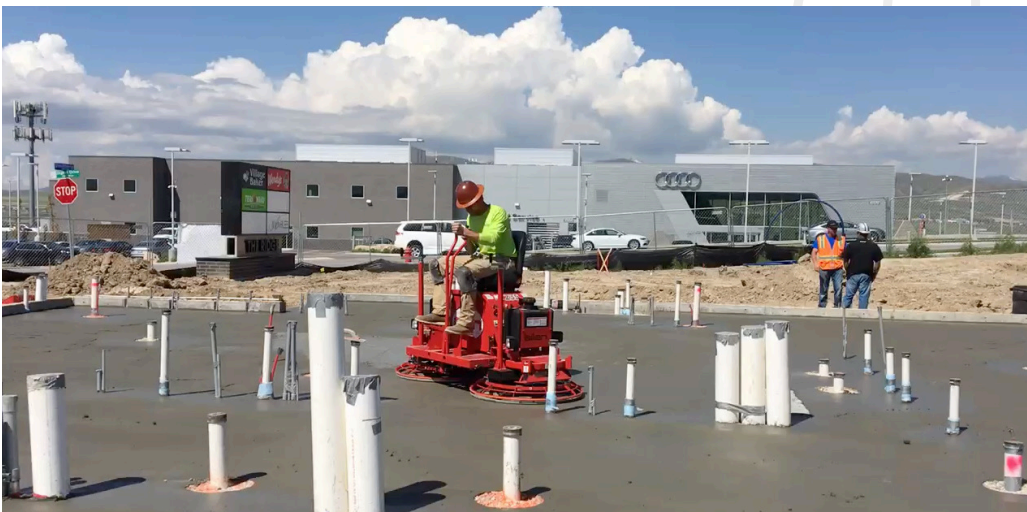


MP235

The patented MP235 Edger, with its unique rotating guard rings, allows you to run along the edges of walls, around columns and pipes—for a close, clean finish every time. This exclusive Allen rider allows you to edge within 5/16" of the edge of a wall, eliminating the need to hand finish those areas. This trowel features a stretched frame for improved productivity and operator comfort.



Scan this QR code to learn more details about this product.



SPECIFICATIONS

SPECIFICATIONS		MP235
ENGINE	Honda GX700 (688 cc)	
HORSEPOWER CLASS	22.1 hp (16.5 kW)	
FUEL TYPE	Air-Cooled Gasoline	
PANNING PATH WIDTH	85 in (216 cm) 6' Class	
ROTOR DIAMETER	36 in (91.4 cm) 4-Bladed Spider	
MAXIMUM ROTOR SPEED	165 rpm	
STEERING CONTROL SYSTEM	Manual	
FUEL CAPACITY	6 gal (23 L)	
RETARDANT CAPACITY	6 gal (23 L)	
WEIGHT	783 lb (355 kg)	
DIMENSIONS (L X W X H)	86 x 39 x 53 in (218 x 99 x 135 cm)	

PART NO.	MODEL NO.	DESCRIPTION
073900	TR-MP235	Mechanical "TC" Torque Converter Clutch Drive, Manual Steering, Twin 36' 4-blade rotors, Honda GX700 22hp class gas engine, rotating guard ring, 4 lights, power retardant spray, standard duty gear boxes, 45-165 RPM Rotor Speeds

PART NO.	MODEL NO.	OPTIONAL ACCESSORIES
039090	TR-DJMSP	Dolly Jacks, Pneumatic Tires, Set of two, 121 lb (55 kg)
067568	TR-LB25-3	Lifting Bridle - 2,500 lbs - 2-Point x 3', 14 lb (6 kg)

BLADE & PAN RECOMMENDATIONS

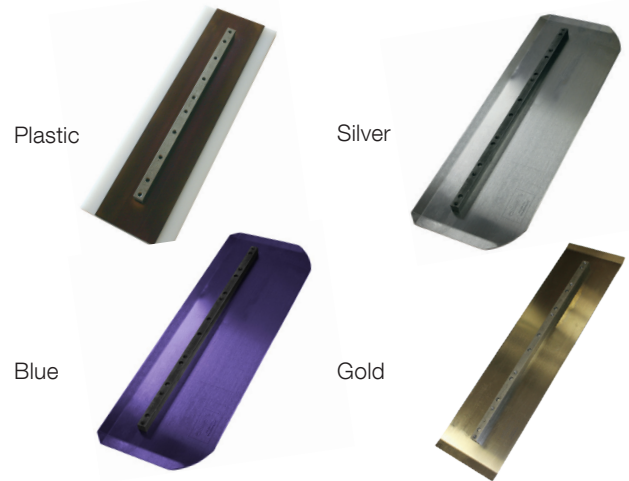
BLADES		MP235
TYPE	PT. NO.	DESCRIPTION
FINISH	041695-4	6" x 14" Edger - Blue Series COMES WITH THE MACHINE
FLAT FINISH	N/A	N/A
COMBO	016095V-4	8" x 14" Combo - Silver Series
CLIP-ON FLOAT (LH)	N/A	N/A
CLIP-ON FLOAT (RH)	N/A	N/A
PLASTIC FINISH	048353-4	6" x 14" - Combo - Steel Reinforced
PANS		MP235
TYPE	PT. NO.	DESCRIPTION
CLIP ON FLAT	039218	36" O.D. - 90° Lip - 4-Blade
SAFETY CATCH FLAT	N/A	N/A

TROWEL BLADES

Allen Engineering offers a complete line of finish blades, combination blades, and clip-on float shoes for your walk-behind or ride-on power trowels. We use high-quality steel or composite plastic with six high-strength rivets to maximize blade life. For the flattest floors, trust only Allen Finishing Blades. And, Allen Blades fit most other brands of walkers and riders.



Scan this QR code to learn more details about this product.



MP235

PART NO.	MODEL NO.	DESCRIPTION
041695-4	TBE6X14S-4	Edger Finish 6" x 14" Silver Series - set of 4, 11 lb (5 kg)
041695A-4	TBE6X14B-4	Edger 6" x 14" Blue Series - set of 4, 12 lb (5 kg)
016095V-4	TBC8-14V-4	Combo 8" x 14" VP Silver Series - set of 4, 14 lb (6 kg)

STEEL FLOAT PANS

Allen Engineering pioneered the use of floating discs (or pans) on riding trowels in 1989 and Allen® Pans remain today the finisher's choice when high FF Numbers are specified on a concrete floor. Allen's flat pan tolerances cut bumps and fill low spots in the concrete floor. Insist on Allen® Steel Pans for your Allen Riders and Walk-Behinds. Made to the same exacting tolerances as the trowels themselves, nothing finishes better.



Scan this QR code to learn more details about this product.



TWO TYPES OF PANS

Allen offers both Flat (0" to 1/8" dish) and Mild-Dished (1/4" to 3/8" dish) steel pans. This gives contractors even more pan choices from Allen.



MADE IN THE U.S.A.
FROM U.S. MADE
STEEL

MP235

PART NO.	MODEL NO.	DESCRIPTION
039218-10	P4C3690-10	36" O.D., Allen Flat, 90° Lip Angle, 4-Blade, Clip On (Ten Pack), 320 lb (145 kg)